

The PROCLAIMER

February 2012

Deadline for the Proclaimer is the 15th of each month!!

“Bread for the Journey”

Wednesday, February 22nd, marks the beginning of Lent this year: a season of forty days of spiritual preparation for the celebration Passion Week. Many people associate Lent with giving up something they like — say, chocolate. But Lent is about much more than fasting or forgoing some of our favorite things. Lent is a season in which we take a deeper look at our spiritual journey . . . our faith-walk with Christ. It is about deepening our faith to see where Christ has called us to walk with Him. It is a time to see where we need God’s grace and forgiveness in our lives and where we have gone wrong.

I, too, urge us all to use the 40 days of Lent to reflect, refocus and renew your relationship with Christ as we journey with Him toward His cross. As our Savior gave up His life for us, we give up those things that get in the way of our becoming more like Jesus. The way I see it, the 40 days of Lent are a time for a spiritual spring cleaning. We remove the dust and we look and examine the clutter in our life. We put things back into perspective and find what is most important. We come back to what is basic and essential in our relationship with God and Christ.

Lent is a time to cross the bridge from busy-ness to solitude, allowing us time to reflect and to pray and experience the presence of God in the midst of our own chaos. Lent is letting go of those things that have taken ownership of us and control us, in order to let God’s control be at the forefront of our lives. To use an old term, Lent is a time when we let go of those false Gods that have claimed our lives and activities and energy and let the true God direct our energy and focus. Lent is about turning our lives over to Christ. Indeed, that will always involve giving up sin in some form. But the goal is not just to abstain from sin for the duration of Lent but to root sin out of our lives forever and to replace it with the holiness that is Christ.

This year, our Mid-week Lenten services will focus on the enrichment we receive from the Bread of Life. In a sermon series entitled: “Bread for the Journey,” we will taste the Lord and realize again just how good He is and how His mercy endures

forever. We will also feast on a weekly variety of fresh bread, baked by our children as part of their spiritual development during our What-a-Wednesday Hour. Our evening worship services will open up all our ‘senses’ to the nourishment that comes alone from the bread of life.

Invite your friends! Call up someone that you haven’t seen in church for a while! Reprioritize your family’s schedule to include God this Lent! For Christians, young, old and in-between, there is no better time to reconnect with their faith than this holiest of seasons.

May God bless us all as we give up our sins and as we feast on His holiness!



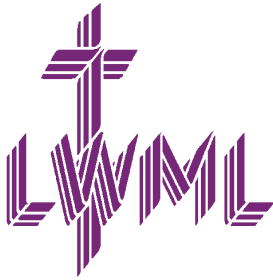
-Pastor Dana

In This Issue:

Pastor’s Article	cover	Volunteer of the Month	8
LWML News, Adult Ministries	2	POP Sponsored Events	7, 9
Memorials		Volunteer Schedule	10
Kidz Connection News	3-4, 9	Crossword	
Preschool News	5	Birthdays & Anniversaries	11
Youth News	6	Calendar	back



ADULT MINISTRIES



The LWML Faith Circle met on January 17, 2012 with many things to plan for the month of February.

Our annual Young at Heart Game Day will be held on Saturday, February 4th from 12:00pm to 3:00pm. All those 65 and older are invited to join us at Immanuel Temple in the cafeteria for a soup and sandwich lunch followed by games and fellowship. Bring your favorite game and a friend for an afternoon of fun and relaxation.

We will also be having a Valentine's Day bake sale and carnation sale on Saturday, February 11th and Sunday, February 12th before and after church services at Immanuel Temple. Stop by the lobby for some tasty homemade treats and a carnation for your Valentine!

Don't forget the big Mites box is located in the Narthex for your loose change donations for missions around the world. Our next meeting will be on Tuesday, February 21, 2012 at 7:00pm. All ladies within the congregation are invited to join us for food, fun and fellowship. For more information, contact Rosella Smith at rosellasmith86@yahoo.com.



If you'd like to become a member of Immanuel Lutheran Ministries, please join us Saturday evenings at 5:00pm at the Temple location starting February 18.



IN MEMORY OF:

ADOLF WINKLER

GIVEN BY:
VICTOR & MAMIE MERSIOVSKY

LAVERNE HAVELAND

UNCLE OF KEN EICHMAN
BROTHER-IN-LAW OF GERI GAFFNEY

GIVEN BY:
RAY & MARGE ECKERMAN

CAMP LONE STAR

**Women's Renewal
Retreat**

Friday-Sunday,
March 16-18, 2012

"Everlasting"

www.LOMT.com

"I have loved you with
an everlasting love;
I have drawn you with
loving kindness." Jeremiah 31:3



Kidz Connection News—FEBRUARY 2012

More information: Contact Marca Scott at 773-3898 or mScott@ilctemple.org

KIDZ CONNECTION NEEDS YOUR HELP!



Each year, Kidz Connection supports two important service projects. First, we gather supplies and send School Kits to Lutheran World Relief. Each school kit costs approximately \$10.00. This year our goal is to send 175 kits. Last year we sent 150 school kits and 35 health kits to Lutheran World Relief. We have purchased the supplies in bulk to save on the cost of each kit. Please support one or more school kits for a deserving child. Your donation helps ensure that children all over the world have necessary supplies to receive an education. We'll be sending the school kits off on Monday, April 9th.

Also, for the second year, we are going to make meals for hungry kids. The entire congregation is invited to come and help on Sunday, March 4th from 2-5 p.m. This project is the designated Service Project for the Lenten Season and was specifically chosen to go with our Lenten Theme, "Bread for the Journey." The meals we make cost about \$0.18 each. We need to cover one half the cost of the food supplies which is \$1,000.00 to participate in this worthwhile endeavor. Please prayerfully consider making a donation to this service project and signing up to help make meals on Sunday, March 4th.

Please, stop by the Kidz Connection table or school kit bulletin board in the main lobby to support these worthwhile projects. Help our kids help other kids and share the Good News of Jesus Christ! THANK YOU!

Kids Against Hunger®

Feeding families around the world...and around the corner.



*In February, 2011
30 volunteers of all ages
spent 2 1/2 hours at Kids
Against Hunger where we
assembled 13,614
meal packets which
will provide a meal for
81,684 children*

IMPORTANT DATES



Wednesday, Feb. 1
5:15 p.m. Dinner
6-7:30 p.m.
Bake Bread for
Lenten Project

Sunday, Feb. 5
11:30-3pm
Bake Bread for
Lenten Project

Wednesday, Feb. 8,15
5:15 pm—Dinner
6:00—FW Friends
Confirmation

Wednesday, Feb. 22,29
5:15 pm Lenten
Dinner
6:00-6:50 p.m.
FaithWeaver Friends
Confirmation

Sunday, Feb. 26
10:30 a.m.
Sing at Immanuel/POP

COMING UP
Saturday, March 3
BHS Fun Run
Sunday, March 4
Kids Against Hunger
2-5p.m.



MARK YOUR
CALENDARS
2 Great Weeks!
Immanuel
June 18-22
9am-Noon
Immanuel-POP
June 24-28
6-8pm
Ages 3 years
to 5th Grade

WE'RE SINGING AT TWO WORSHIP SERVICES

Sunday, February 26th at Immanuel POP at 10:30 a.m.

Sunday, March 4th at Immanuel at 10:30 a.m.

We'll be practicing during Sunday School
and on Wednesday evenings

See Ms. Marca for words and music!





Bread for the Journey

Our Lenten theme this Spring, Bread for the Journey, provides bread for the body and the soul, as well as many opportunities for the entire congregation to participate. Kidz Connection will be baking bread for each Lenten Service and sharing that bread each week during a special Children's Time. Our kids will also be making banners, putting together a "bread of life" cookbook and reaching out to other kids through our service projects. Mark your calendars and plan to be a part of our journey beginning Ash Wednesday, February 22nd.

1. Design the Cover for the "Bread of Life" cookbook

Submit as many drawings as you like in the box on the Kidz Connection Bulletin Board. Entries should be submitted on a 3x5 index card in color, clearly marked with your child's name and age on the back of the index card. Drawings can be submitted February 1-February 22nd. Winner will be announced Sunday, February 26th.

2. Let's Bake Bread

Join us on Wednesday, February 1st from 6:00-7:30 p.m. and Sunday, February 5th after worship from 11:30-3:00 p.m. We'll be baking individual loaves of bread to be given as gifts throughout the Lenten Season. Parent help appreciated.

3. Get Others Involved in Service

During the month of February, we will have post cards available for you to mail to your family and friends asking for donations to help support the Kidz Connection service projects, Lutheran World Relief School Kits and Kids Against Hunger. Pick the post cards up from Ms. Marca or your Sunday School Teacher and help make our service projects successful!

4. Cookbook Assembly

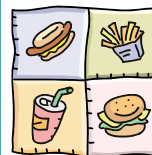
We'll meet in March to assemble our "Bread of Life" cookbooks. Watch the Worship News insert for the date and time.



FEBRUARY CONFIRMATION NEWS Mrs. Scott Teaching on the Lord's Prayer

2/1 Service Project Updates Due; Chapter 15 Quiz; Review of Chapter Sixteen; 2/8 Chapter 16 Quiz; Review of Chapter Seventeen
2/15 Chapter 17 Quiz; Review of Chapter Eighteen
2/22 Chapter Eighteen Quiz; Review for Exam
2/29 Lord's Prayer Exam

Note: During Lent, February 22nd, Ash Wednesday, to Wednesday, March 28th Confirmation class will meet from 6:00-6:50 p.m. Confirmation WILL NOT meet on Wednesday, March 14th during Spring Break.



JOIN US FOR DINNER!

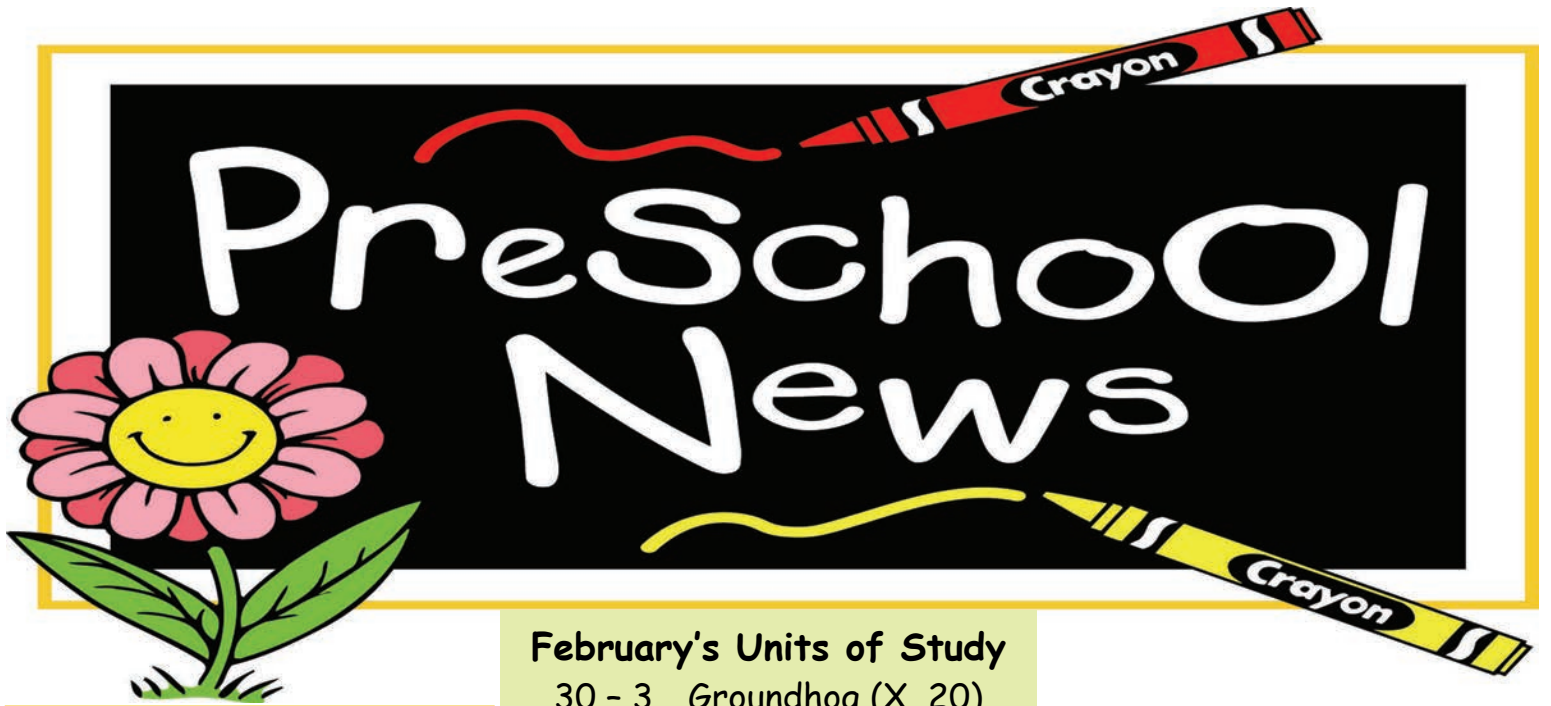
Feb. 1— Chili Dogs and all the Fixins
Feb. 8—Chicken Nuggets, Mashed Potatoes, Gravy
Feb. 15—Pizza and Salad
All dinners include drink and dessert.
Feb. 22 and 29-Lenten Meals

JOIN MRS. BUUCK DURING FEBRUARY FOR FAITHWEAVER FRIENDS

Feb. 1-15 - 6:00-7:30 p.m.
Feb. 22-29 - 6:00-6:50 p.m.
Bible Stories, Crafts, Games
and lots of Fun!



MORE KIDZ CONNECTION NEWS ON PAGE 9



February's Units of Study

- 30 - 3 Groundhog (X, 20)
- 6 - 10 Dental Health (Y, Uno)
- 13 - 17 Valentines (Z, Dos)
- 20 - 24 Community Helpers (A, Tres)

Director Announcements

Tax statements will be available no later than January 31st. Those statements will be completed and in your child's cubby. Should you have any questions, comments or concerns feel free to contact me at your convenience.

FAMILY REFERRAL

Refer a family and receive one week free tuition. If you refer a family and they attend for at least one month you will receive one week free tuition.



Parent Teacher Group (PTG)

The Parent Teacher Group has been meeting the second Monday of each month at 6:00 p.m. in the cafeteria. Thank you for the great meeting on January 9th. There was a lot of discussion on the PTG roles and goals. There is also talk of moving the meeting to an early time of day (4:45ish) so that parents could attend while their child is still in care. Also moving it to the first Monday of the month. We will make this final decision asap and put out the information along with a summary of the meeting.



OPEN HOUSE



I want to invite everyone to our Open House. The event will be on Friday February 24th from 4:00 p.m. to 7:00 p.m. There will be snack (made by the students) and drinks. The classrooms will be open and you are welcome to visit. Spread the word; the invitation is open to everyone. This is also a good time to use your family referral option! More info will be coming soon.

Youth News!

YOUTH QUAKE! FEB 10-12

**BE AT THE CHURCH BY 5:00 ON THE 10TH
PICK UP AT 1:00ISH ON THE 12TH**

**FOLLOW UP MEETING FOR YOUTH QUAKE ON
FRIDAY FEB 24 FROM 6:30-8:00.
BRING YOUR FAVORITE BOARD GAME!**



After School Study Hour



We are starting something new. At Immanuel—Prince of Peace in Belton, we are having an after school study hour where high school students can come and work. This is not play time, but school time! This is where students can meet and get projects & big papers done, read, or study for the next test! (Tutors are available!)

Every School Monday! (We do not meet on Feb 20)

SEX!

Do I have your attention?

We will be having a Purity Retreat for High Schoolers as a weekend get-a-way at R & J River Ranch on March 23-25.

More details to come!

We will have a Day Purity Talk for Jr. High Come late April after Easter.

**Parents information meeting for these events will be on
February 19th after the 10:30 Service!**

Kids Against Hunger

Need volunteers to sign up
Monetary Donations are also needed

Upcoming March Events

Kids Against Hunger—March 4
Spring Break—March 12-16
High School Purity Retreat—March 23-25



This year's event will again take place at the Mayborn Center at UMHB. Various community groups will construct displays using only cans of food. Last year's construction "King TunaCANmun" won national acclaim.

The public will be invited to view the structures as they are being built (from 5-8 pm) on Thursday, February 2. Suggested donation for admission is \$5.

All structures will be on display for free on Friday, February 3 and Saturday, February 4. All who attend are encouraged to bring a non-perishable food item or a \$1 donation. Attendees will be able to vote on their favorite exhibit.

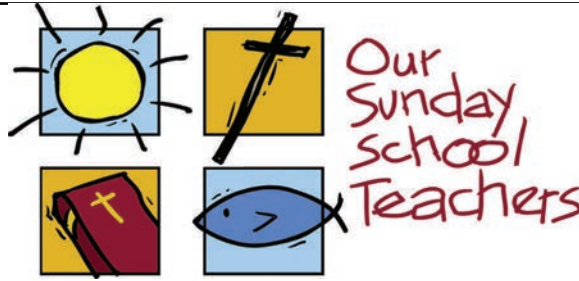
The apex of the event weekend will be Saturday evening as the teams will be awarded for their efforts. The banquet speaker will be Dr. George Harrison of UMHB. The cost per person will be \$30 or \$200 per table of 8.

At the completion of construction, all cans of food and monies will be donated to Helping Hands Ministry.

IMMANUEL MINISTRIES
Statement of Revenues and Expenditures (Actual to Budget-Modified Cash Basis)
GENERAL and DESIGNATED FUNDS
For the Twelve Months Ended December 31, 2011

	GENERAL FUND						DESIGNATED FUND
	CHURCH		ECC		COMBINED GENERAL FUND		Unbudgeted
	Dec-11	Budget	Dec-11	Budget	Dec-11	Budget	Dec-11
Revenues							
41500 - GENERAL FUND CONTRIBUTIONS	\$ 729,385.23	\$ 783,000.00	\$	\$	\$ 729,385.23	\$ 783,000.00	\$
41520 - MEMORIALS GENERAL FUND	19,750.00	1,800.00			19,750.00	1,800.00	
41560 - OFFERINGS- BENEVOLENCE	8,079.00	-			8,079.00	-	
41600 - CHILDRENS' MINISTRY INCOME	32,886.33	31,325.00			32,886.33	31,325.00	
41700 - YOUTH MINISTRY INCOME	11,439.70	13,775.00			11,439.70	13,775.00	
41780 - ADULT MINISTRY INCOME	193.00	3,000.00			193.00	3,000.00	
41790 - SHEPHERD'S STAFF INCOME	-	2,000.00			-	2,000.00	
41800 - OTHER CHURCH INCOME	13,857.42	600.00			13,857.42	600.00	
ALMS OFFERINGS							7,559.96
DESIGNATED DONATIONS							5,700.00
FAN INTO FLAME RECEIPTS							91.80
INVESTMENT INCOME							53.67
42000 - EARLY CHILDHOOD CENTER INCOME			340,677.02	370,260.00	340,677.02	370,260.00	
Total Revenues	815,590.68	835,500.00	340,677.02	370,260.00	1,156,267.70	1,205,760.00	13,405.43
Expenditures							
60000 - GENERAL AND ADMINISTRATIVE	42,392.04	39,300.81			42,392.04	39,300.81	43.50
60900 - BENEVOLENCES-WORLD MISSIONS	79,936.00	84,420.00			79,936.00	84,420.00	
ALMS EXPENDITURES							7,312.86
60930 - SPECIFIC BENEVOLENCES	7,147.88	2,400.00			7,147.88	2,400.00	100.00
61000 - PAYROLL EXPENSE	362,435.79	380,032.75	279,219.35	285,791.90	641,655.14	665,824.65	
62000 - ECC MINISTRY			73,536.19	69,075.00	73,536.19	69,075.00	
63000 - WORSHIP PROGRAMS	4,511.01	3,600.00			4,511.01	3,600.00	
63700 - ALTAR GUILD	980.18	3,000.00			980.18	3,000.00	
63800 - SHEPHERD'S STAFF	10,678.39	12,620.00			10,678.39	12,620.00	
64000 - MUSIC MINISTRY	17,319.31	23,550.00			17,319.31	23,550.00	
65000 - CHILDRENS MINISTRY	57,929.65	57,821.00			57,929.65	57,821.00	
66000 - YOUTH MINISTRY	16,719.09	32,941.00			16,719.09	32,941.00	
67000 - ADULT MINISTRY	3,410.54	10,100.00			3,410.54	10,100.00	
68000 - OCCUPANCY	76,076.29	77,458.00	43,321.67	43,952.00	119,397.96	121,410.00	
Total Expenditures	679,536.17	727,243.56	396,077.21	398,818.90	1,075,613.38	1,126,062.46	7,456.36
Ordinary Revenues in Excess of Expenditures	136,054.51	108,256.44	(55,400.19)	(28,558.90)	80,654.32	79,697.54	5,949.07
Other Revenue (Expenditures)							
95000 - TRANSFER FROM CHURCH TO ECC	(61,948.91)		61,948.91		-	-	
95010 - TRANSFER TO DESIGNATED FUND	(9,638.40)				(9,638.40)		(5,807.42)
98000 - FIXED ASSET PURCHASES	(62,284.31)	(29,000.00)	(1,029.36)	(6,000.00)	(63,313.67)	(35,000.00)	
98500 - DEBT SERVICE	(22,601.83)	(27,997.54)			(22,601.83)	(27,997.54)	
98800 - PRINCE OF PEACE	(4,380.19)	-			(4,380.19)	-	
Excess (Shortage) of Receipts over Expenditures	\$ (24,799.13)	\$ 51,258.90	\$ 5,519.36	\$ (34,558.90)	\$ (19,279.77)	\$ 16,700.00	\$ 141.65

VOLUNTEERS OF THE MONTH



This month the staff has chosen our Bible Study Leaders and Sunday School Teachers as the volunteers of the month. Although their talents, methods of presentation, and leadership styles are diverse, they all are one-minded in their love for Christ Jesus and sharing His Word with others. These folks spend many hours praying, preparing, and then presenting each week Bible lessons that not only help us all grow in our faith, but challenge us to live out our faith daily. We appreciate each one of our teachers! *“What you heard from me, keep as the pattern of sound teaching, with faith and love in Christ Jesus. Guard the good deposit that was entrusted to you - guard it with the help of the Holy Spirit who lives in us.” 2 Timothy 1:13-14*

Sunday School: *Preschool- Heidi Cowan, Nita Libersky; PreK-K-Teresa Lockett, Kari Roepke; 1st-2nd Grade-Angi Bridges; Jeff and Shelly Buuck; 3rd-4th Grade-Cathy Foreman, Debbie Mersiovsky; 5th Grade-Gene Doss, Jim Holliman*
Youth: *Jr. High- Kayla Winkler; Sr. High- J. W. Krueger, Pastor Grayson*
Adult: *Pam Birchard, Jeanette Dunlop, Rob Fix, Royce Winkler, Pastor Dana, Greg Oermann, Sherry White, Earl Young *and a special thanks to those that substitute teach!*

VISIT US ON:

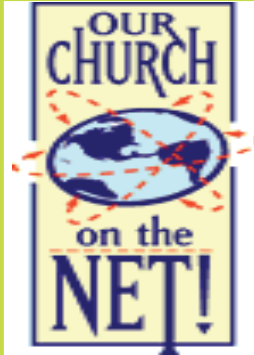


<https://www.facebook.com/ilctemple>



VOLUNTEERS NEEDED

Do you have time to volunteer in our Food Pantry? Volunteers are needed for 2 hours each Wednesday. Please contact Gertrude Kunkel if you are interested. 254-778-6275.



www.ilctemple.org

2012



Saturday 6pm
Sunday 8am
Sunday 10:30am (I-POP)
Sunday 10:30am
 Future Services TBD
 2nd I-POP Service, Youth Service

Dear Brothers and Sisters in Christ,

The time has passed so rapidly that I almost missed the opportunity to thank each and every one of you for all of the wonderful gifts we received during this Advent and Epiphany Season. Your love and support make Dana and I truly feel like we are part of each and every one of your families. We sincerely thank you for your continued strength, encouragement, prayers, and devotion to us for this ministry and our family. We pray Gods riches blessings and Grace on each of you this New Year. We Love Ya!!!

In Christ Love,
 Vera and Dana



FOOD PANTRY VOLUNTEER WORKERS

February is the month for Immanuel Prince of Peace to provide volunteers to work at the Helping Hands Food Pantry in Belton.

Volunteers restock shelves, assist clients in selecting/sacking food and checking out and also work with clothing.

The Food Pantry is open 10-4 on Monday and Tuesday and noon-6 on Thursdays. No volunteers are needed on Thursdays and only 1-2 per hour are needed on the other days. A sign-up sheet for volunteers will be posted on the bulletin board.



ASH WEDNESDAY

February 22

5:30pm—BELTON
meal following service at 6:30pm
7:00pm—TEMPLE
meal before service at 5:15pm

MID-WEEK LENT SERVICES

TEMPLE

February 29 7:00pm
March 7 7:00pm
March 14 7:00pm
March 21 7:00pm
March 28 7:00pm

BELTON

March 1 5:30pm
March 8 5:30pm
March 15 5:30pm
March 22 5:30pm
March 29 5:30pm

HOLY WEEK SERVICES

April 5	7:00 pm	Temple	Maundy Thurs w/Com
April 5	5:30 pm	Belton	Maundy Thurs w/Com
April 6	12:00 pm	Temple	Good Friday w/Com
April 6	7:00 pm	Temple	Good Friday Tenebrae
April 6	5:30 pm	Belton	Tenebrae w/Com
April 7	6:00 pm	Temple	Easter Vigil
April 8	7:00 am	Temple	Sunrise Worship w/Com
April 8	7:00 am	Belton	Sunrise Worship
April 8	9:00 am	Temple	Traditional
April 8	10:00 am	Belton	Traditional w/Com
April 8	11:00 am	Temple	Easter Praise w/Com



SOUPER BOWL SUNDAY February 5

Souper Bowl Sunday reminds us as we watch the Super Bowl that many do not even have soup to eat.

On Sunday, February 5, everyone is asked to bring a can of soup, other canned food items, or a cash donation to church. There will be a receptacle in the Narthex. Everything collected will go to the Belton Helping Hands Ministry.

MORE Kidz Connection News



IMPORTANT ORGANIZATIONAL AND PLANNING MEETING

Who: All Camp Instructors who Plan to Teach this Summer or Persons Interested in Applying to Teach This Summer

Why: Schedule Dates, Information About Camps and Supply Ordering

Time: Come to one: 11:00 a.m. OR 6:00 P.M.
MONDAY, February 27th

Place: Room 101 at Immanuel

RSVP: Which Time you Will Attend to Marca



VACATION BIBLE SCHOOL WORK DAY

MONDAY, FEBRUARY 20th
6-8 P.M.

Wear old clothes, bring a pair of sharp scissors and a friend!
Something for everyone to do!
Painting, craft preparation, mailing.
The sky's the limit at this VBS!

JOIN MS. MARCA AT PROJECT CELEBRATION AND BE A PART OF THE IMMANUEL WINNING TEAM!

Saturday, March 3, 2012 8:30 a.m.
Pepper Creek Trail

Refreshments, T-Shirts, Inflatables
\$10.00 per student; \$25.00 per adult benefits
PROJECT CELEBRATION

Activity for Belton High Graduating Seniors
Come on out and support our Community
And Have Lots of Fun!



FEBRUARY VOLUNTEERS

READERS

Temple

2-4 6PM Shirley Buser
 2-5 8AM Matt Johnson
 2-5 1030 Lerah Foreman
 2-11 6PM Shirley Buser
 2-12 8AM Dale Sitz
 2-12 1030 Greg Oermann
 2-18 6PM Shirley Buser
 2-19 8AM Cheryl Davis
 2-19 1030 Marca Scott
 2-22 7PM
 2-25 6PM Shirley Buser
 2-26 8AM Janet Lockwood
 2-26 1030 Bob Edwards
 2-29 7PM

Belton

2-5 1030 Samuel Gasca
 2-12 1030 Steve Newberry
 2-19 1030 Rick Carter
 2-26 1030 Sharon Fischer

ALTAR GUILD

Temple

Lanell Mersiovsky, Sheila Randolph,
 Yolanda Medrano

Belton

Doris Tucker & Jeanette Sefcik

USHERS

Saturday 6PM Services

Josie Morris & Yolanda Medrano

Sunday 8AM Services

Michael Melcher & Harold Schwausch &
 Chuck Zahn

Sunday 1030 Services—Temple

Sunday 1030 Services—Belton

Bill Tucker, Lawrence Hanke, Herbert
 Mersiovsky, Mary Hanke, Jeri Pechal,
 Jerome Pechal

GREETERS

Saturday 6PM Services

Gertrude Kunkel

Sunday 8AM Services

Ken Eichmann & Jim Davis

Sunday 1030 Services—Temple

Buuck Family

Sunday 1030 Services—Belton

5-Jeri & Jerome Pechal
 12-Esther Matus & Kathy Myers
 19-Sharon Leiker & Karen Stagner
 26-David & Marsha Winkler

ACOLYTES

2-4 6PM Henry Haisler
 2-5 8AM Jake Schnitker
 Crucifer Will Schnitker
 2-5 1030 Anna Becker
 2-11 6PM Sophia Weedman
 2-12 8AM Jordan Gensler
 2-12 1030 Kyle Winters
 2-18 6PM Matt Dippel
 2-19 8AM Jamie Rich
 Crucifer Nick Foreman
 2-19 1030 Kaylee Buuck
 2-22 7PM Hailey Loesch
 2-25 6PM David James
 2-26 8AM Bethany Edwards
 2-26 1030 Monica Weedman
 2-29 7PM Jake Schnitker

LAWN CARE

Temple

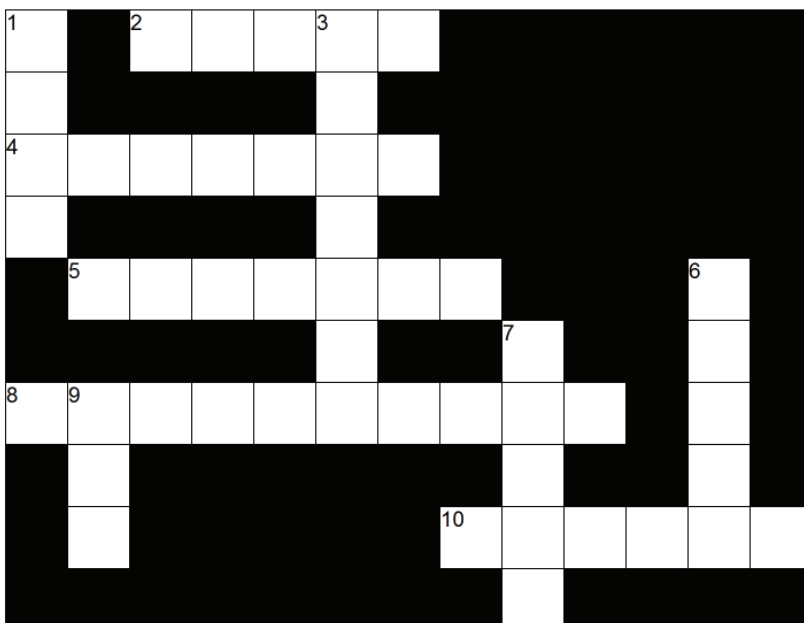
Volunteer still needed

Belton

Richard Carter

IF YOU ARE UNABLE TO VOLUNTEER ON THE DAY ASSIGNED, PLEASE CALL SOMEONE AND SWITCH. IF YOU WOULD LIKE TO SIGN UP, PLEASE CONTACT THE CHURCH OFFICE. THANK YOU!!!

Crossword Fun!



ACROSS

- 2 ____ of Life
 4 VBS ____ (Feb 20)
 5 Bread for the ____
 8 Happy ____ Day (Feb 14)
 10 ____ Beginnings Open House
 (Feb 24)

DOWN

- 1 Super & Souper ____ (Feb 5)
 3 Kids ____ Hunger (Mar 4)
 6 ____ Quake (Feb 10-12)
 7 Young at ____ Game Day
 (Feb 4)
 9 ____ Wednesday (Feb 22)

January Solutions: Across 5)KICKOFF, 6)EPIPHANY, 8)HOUR Down 1)GAME, 2)LUTHER, 3)SKY, 4)MISSION, 7) NEW

FEBRUARY BIRTHDAYS & ANNIVERSARIES



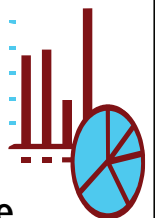
Happy Anniversary

2/1	LOYD FOLZ LATRICIA SKRABANEK TANNER SMITH AUSTIN STRUCKMEYER	2/13	KENNETH EICHMANN DORIS HUBER EMILY MOQUIN JORDAN MOQUIN
2/2	JIM GRANFOR TYLER HILLIARD CHAD WINKLER	2/14	DAVID KUNKEL KATHY WRIGHT
2/3	DAVID LOCKWOOD TRINITY MCADOO ANNIE MINGA JOHN MURRAY	2/15	MARGILEE JONES ROSEMARY SEILER
2/4	REBECCA BAIN ROBERT BASS EDGAR CHILDERS JIMMY COTTEN WAYNE COTTEN STACEY EDWARDS	2/16	JUDY CARLSON SHERON DRIESSNER
2/5	GROVER ALBERT MEGAN GERSBACH JENNIFER NASER	2/17	JOHNNIE HUSTED JOE LATHAM
2/6	RAYMOND KLEIN RICHARD RANSPOT JANIS RINGSTAFF	2/18	Dick RIESS GRACE SMITH LINDA STRUCKMEYER
2/7	MATTHEW RANDOLPH STEVEN SMITH	2/19	VIVIAN BLANKEMEIER RONNIE KLEYPAS
2/8	COLEMAN BASS TANNER BASS SAMUEL FOREMAN TERESA SCHAUER	2/20	EVELYN CRAIG REENEEA SCHRAEDER
2/9	BRANDI COBB LAWRENCE GRAVES IV JEANETTE STEWART WILLIE MAE YAUK	2/21	TWILA COLEY
2/10	DAWN RIESS EMILY WILLIAMS MATTHEW YOUNG	2/22	EMMA DUNGAN JIM HOLLIMAN Matt MCADOO
2/11	BRANDON FOLKS CLYDE SANDERS	2/23	KIM DIPPEL HENRIETTA EVERETT COLE FRANCIS
2/12	PATTI MOQUIN	2/24	JEAN BROTHERS WILLIAM BUNKER
		2/25	MADELYNE FRANKS JENNIFER RODRIGUEZ JAMES STEWART
		2/27	LONDON YEPEZ
		2/28	DOUGLAS FRANKS II GERI GAFFNEY
		2/29	JOSEPH SCHILLER DUNCAN SMITH ALEXANDRA HARGROVE

2/6	GLENN & DARLENE GRAVES
2/7	PAUL & ROSEMARY SEILER
2/11	LAWRENCE & MARY HANKE
2/12	GREGORY & DEIDRE PECHAL
2/16	LARRY & LOIS SOUTHERLAND
2/17	LINDA & DENNIS DRAKE
2/18	CASEY & TINA WINTERS
2/20	VIRGIL & BERNICE DEAVER STEVE & BETTY NEWBERRY
2/21	ARNOLD & SHIRLEY HAUGEBERG
2/24	ERNEST & LILLIAN WINKLER
2/26	LARRY & ANDREA WILKEY
2/28	BRIAN & MARTY BIBLER DAN & TOMMYE CONN



December Statistics*



Average Attendance

2010...364 2011...370

Communed during month:

2010... 703 2011... 658

FINANCIAL STATS through 12/31/2011

YTD Income	
Actual	\$815,846.95
Budget	\$835,500.00

YTD Expenses	
Actual	\$776,407.90
Budget	\$774,441.06

*Statistics are for Immanuel Lutheran—Temple

FEBRUARY

2012

Immanuel Lutheran Ministries

www.ilctemple.org

Temple Campus (ILC)
2109 West Avenue H
Temple, Texas 76504
Church 254-773-3898
Preschool 254-773-9485

Belton Campus (I-POP)
1215 S. Wall Street
Belton, Texas 76513
Church & CDO 254-939-0824

Sun	Mon	Tues	Wed	Thur	Fri	Sat
<p>ABS - Adult Bible Study BOD—Board of Directors ELC - Early Learning Center FH - Fellowship House JHY—Junior High Youth LBS - Ladies Bible Study LPC - Large Print Center MPG - Men's Prayer Group</p>		<p>PTG—Parent Teacher Group S.A.M.—Single Adult Ministry SS - Sunday School W-A-W - What-A-Wednesday Worship/C - Worship with Communion YBS - Sr. High Youth Bible Study</p>	<p>1 9:00am ELC Chapel 5:15pm FW Family/ Friend Meal 5:30pm Handbells 6:00pm WAW FW, Confirmation, JHY, YBS, ABS, KC Bakes Bread in Kitchen 6:15pm Choir 7:15pm Youth Praise</p>	<p>2 8:30am CDO-IPOP 10:00am LBS—FH 7:00pm Adult Praise Worship Practice</p>	<p>3 Church Office Closes @ Noon Pastor Grayson, Pastor Dana, Ken & Marca Off</p>	<p>4 7:00am MPG 11:30am Young @ Heart Game Day 4:30pm Acoustic Practice 5:00pm Bible Class 6:00pm Worship</p>
<p>5 8:00am Worship/C 9:15am SS/Bible Class 10:30am Worship, Worship/C-IPOP 11:30am Bake Bread</p> 	<p>6 4:00pm Yth Study Hour—I-POP 4:45pm ELC PTG Mtg 5:00pm Acoustic Practice 5:30pm ELC Minis- try Meeting 6:00pm Children's Advisory, Worship Committee Mtg</p>	<p>7 8:00am LPC #44 Workday 8:30am CDO-IPOP 11:30am Grief Sup- port-FH 7:00pm Elder's Mtg</p>	<p>8 9:00am ELC Chapel Bumblin' Bee Quilt- ers—FH 5:15pm FW Family/ Friend Meal 5:30pm Handbells 6:00pm WAW FW, Confirmation, JHY, YBS, ABS 6:15pm Choir 7:15pm Youth Praise</p>	<p>9 8:30am CDO-IPOP 10:00am LBS—FH 7:00pm Adult Praise Worship Practice</p>	<p>10 Church Office Closes @ Noon 7:00pm SAM Pastor Grayson, Pastor Dana, Ken & Marca Off</p>	
						YOUTH QUAKE
<p>12 8:00am Worship Baptism-McCutchen 9:15am SS/Bible Class 10:30am Worship/C Pray, Play, & Praise, Worship/C-IPOP LWML Bake/Flower Sale</p>	<p>13 4:00pm Yth Study Hour—I-POP 5:00pm Acoustic Practice 6:30pm Admin Council</p>	<p>14 8:00am LPC #44 Workday 8:30am CDO-IPOP 1:30pm Elderberries 6:30pm Thrivent-FH 7:00pm BOD</p> 	<p>15 PROCLAIMER DEADLINE 9:00am ELC Chapel 5:15pm FW Family/ Friend Meal 5:30pm Handbells 6:00pm WAW FW, Confirmation, JHY, YBS, ABS 6:15pm Choir 7:00pm Confirmation Parent Meeting 7:15pm Youth Praise</p>	<p>16 8:30am CDO-IPOP 10:00am LBS—FH 7:00pm Adult Praise Worship Practice</p>	<p>17 Church Office Closes @ Noon 6:00pm Confir- mation Lock-In (ILC GYM) Pastor Grayson, Ken & Marca Off</p>	<p>18 7:00am MPG 4:30pm Acoustic Practice 5:00pm Bible Class 6:00pm Worship Baptism-Perkins</p>
						YOUTH QUAKE
<p>19 8:00am Worship/C 9:15am SS/Bible Class 10:30am Worship, Worship/C-IPOP</p>	<p>20 5:00pm Acoustic Practice 6:00pm VBS Work- day</p> 	<p>21 8:00am LPC #44 Workday 8:30am CDO-IPOP 11:30am Grief Sup- port-FH 7:00pm LWML</p>	<p>22 ASH WED 9:00am ELC Chapel Bumblin' Bee Quilt- ers—FH 5:15pm Lenten Meal, Handbells 5:30pm Worship/C- IPOP, soup after 6:00pm WAW FW, Confirmation, JHY, YBS, ABS 6:00pm Choir-101 7:00pm Worship/C</p>	<p>23 8:30am CDO-IPOP 10:00am LBS—FH 7:00pm Adult Praise Worship Practice</p>	<p>24 Church Office Closes @ Noon 4:00pm Bright Beginnings Open House 6:30pm Jr High Night 7:00pm SAM Pastor Dana, Ken & Marca Off</p>	<p>25 7:00am MPG 4:30pm Acoustic Practice 5:00pm Bible Class 6:00pm Worship/C</p>
<p>26 8:00am Worship 9:15am SS/Bible Class 10:30am Worship/C Pray, Play, & Praise, Worship/C-IPOP, -Kidz Conn. sings</p>	<p>27 11:00am Summer Camp Meeting 4:00pm Yth Study Hour—I-POP 5:00pm Acoustic Practice 6:00pm Summer Camp Meeting 7:00pm Adult Min- istry</p>	<p>28 8:00am LPC #44 Workday 8:30am CDO-IPOP 6:30pm Youth Advi- sory Committee</p>	<p>29 9:00am ELC Chapel 5:15pm Lenten Meal, Handbells 6:00pm WAW FW, Confirmation, JHY, YBS, ABS 6:00pm Choir-101 7:00pm Worship 8:00pm Youth Praise</p>			